



# Residential Living and Learning

A&M-COMMERCE

## Keep Our Summer Camps Safe!

### Residence Hall Safety



**Hand sanitizer stations** located throughout each residence hall



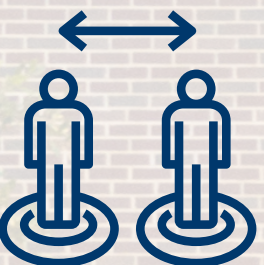
Extra sanitation rounds and **cleaning provided** by custodial staff.



All campers will be placed in a **single bedroom** with a shared bathroom.



Each camper will be required to complete a **pre-camp health screening form**



**Social distancing guidelines** will be enforced and large group gathering will not be permitted

### What else are we doing?



**Meal times** will be staggered to prevent large groups in the cafeteria

Occupancy numbers have been adjusted to **accommodate for smaller group** activities rather than large group



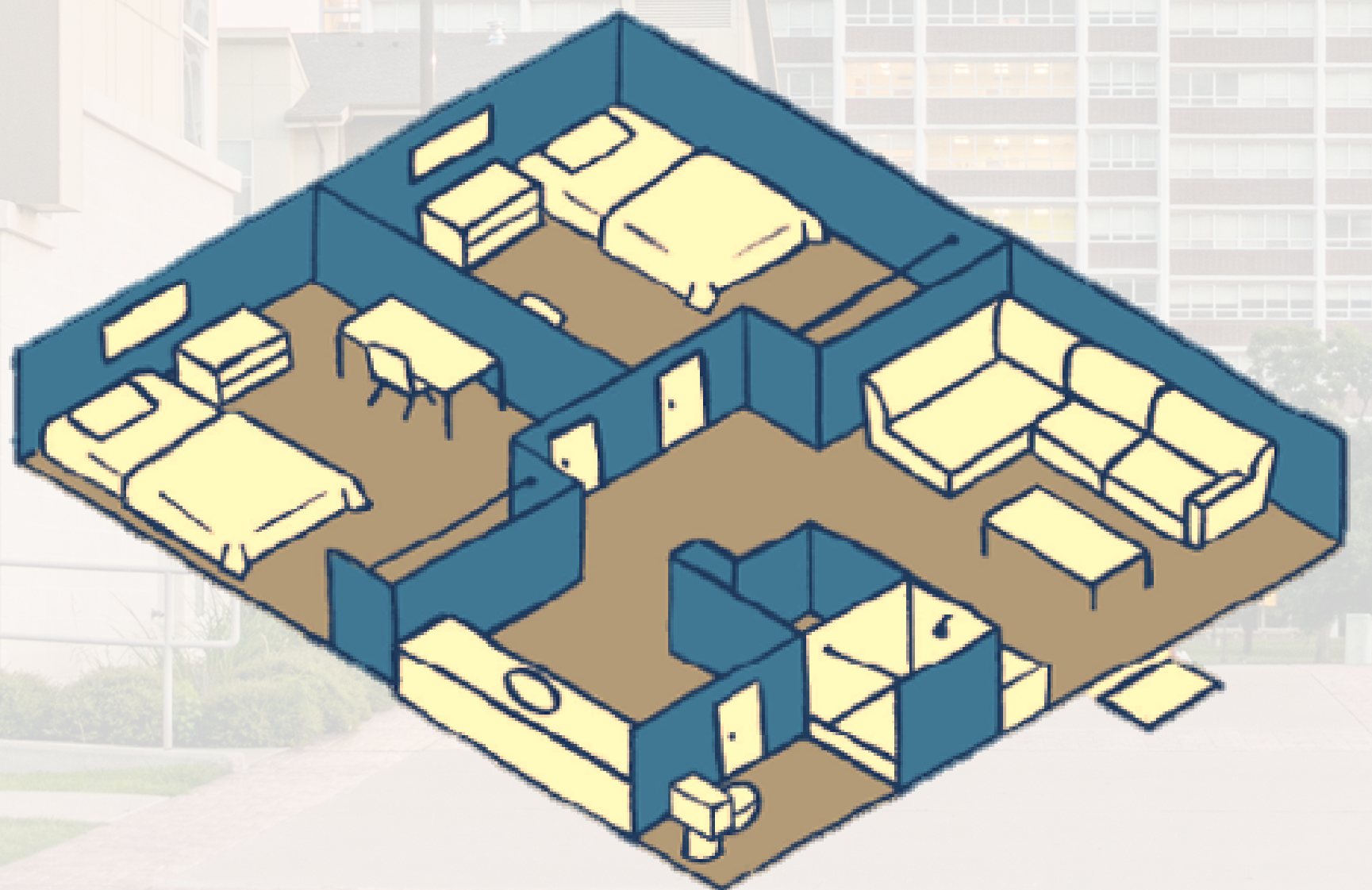
Camps must have a **staff to camper ratio of at least 1:15** to assist with managing all camp tasks and safety protocols

### Campers should stay home if...



- They are **feeling sick**
- They have a **sick family member** at home
- If campers begin to feel sick during their stay, it is recommended they **depart camp to go home**

### Floor plan for room assignments



**WE HOPE TO SEE YOU ON CAMPUS THIS SUMMER!**